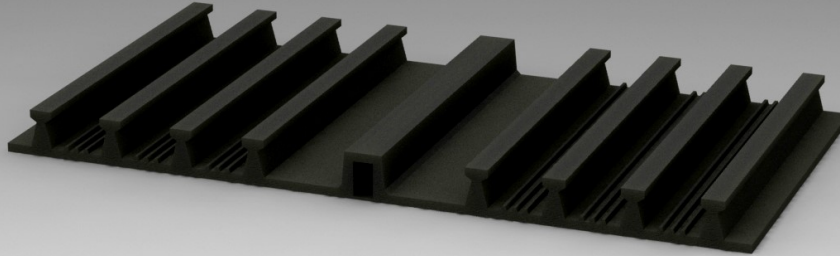


Waterstop Type AM500



TYPICAL APPLICATION

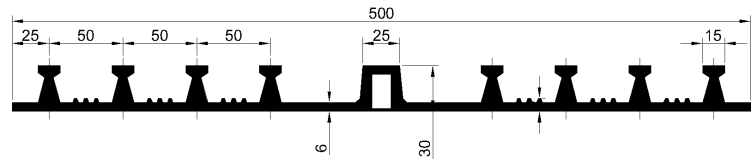
culverts, retaining walls, bridge abutments, foundations, basements, underground construction works, tunnels, aqueducts

Trelleborg AM series are typically mounted on the 'wet' side of a concrete structure. This type of waterstop protects the joint against ingress of mud or any other substance. This waterstop is also installed in structures where a "double tightness" system is desired, e.g. nuclear power plants or at ramps to motorway tunnels. This type of waterstop is only recommended in open structures such as tunnel roofs where air can be trapped within the joint.

ADVANTAGES

Easy to install, high performance, enables structure movement in all directions, bespoke design available.

TECHNICAL PROPERTIES



Gross dimensions	500 x 30 mm
Weight	6.8 kg/m
Materials	SBR
Elongation at break	≥ 380%
Tensile strength	≥ 10 N/mm ²
Hardness	62 ± 5 Shore A
Capacity	up to 40mm elongation or 10mwc maximum to DIN18197

Product specifications and performance may be subject to project specific conditions or local design constraints. For advice on product performance, application and installation, construction possibilities and technical queries contact us.

GET IN TOUCH

Trelleborg Ridderkerk B.V.

Website: trelleborg.com/marine-and-infrastructure

Email: marine_infra@trelleborg.com

Phone: +31 (0)180 495 555